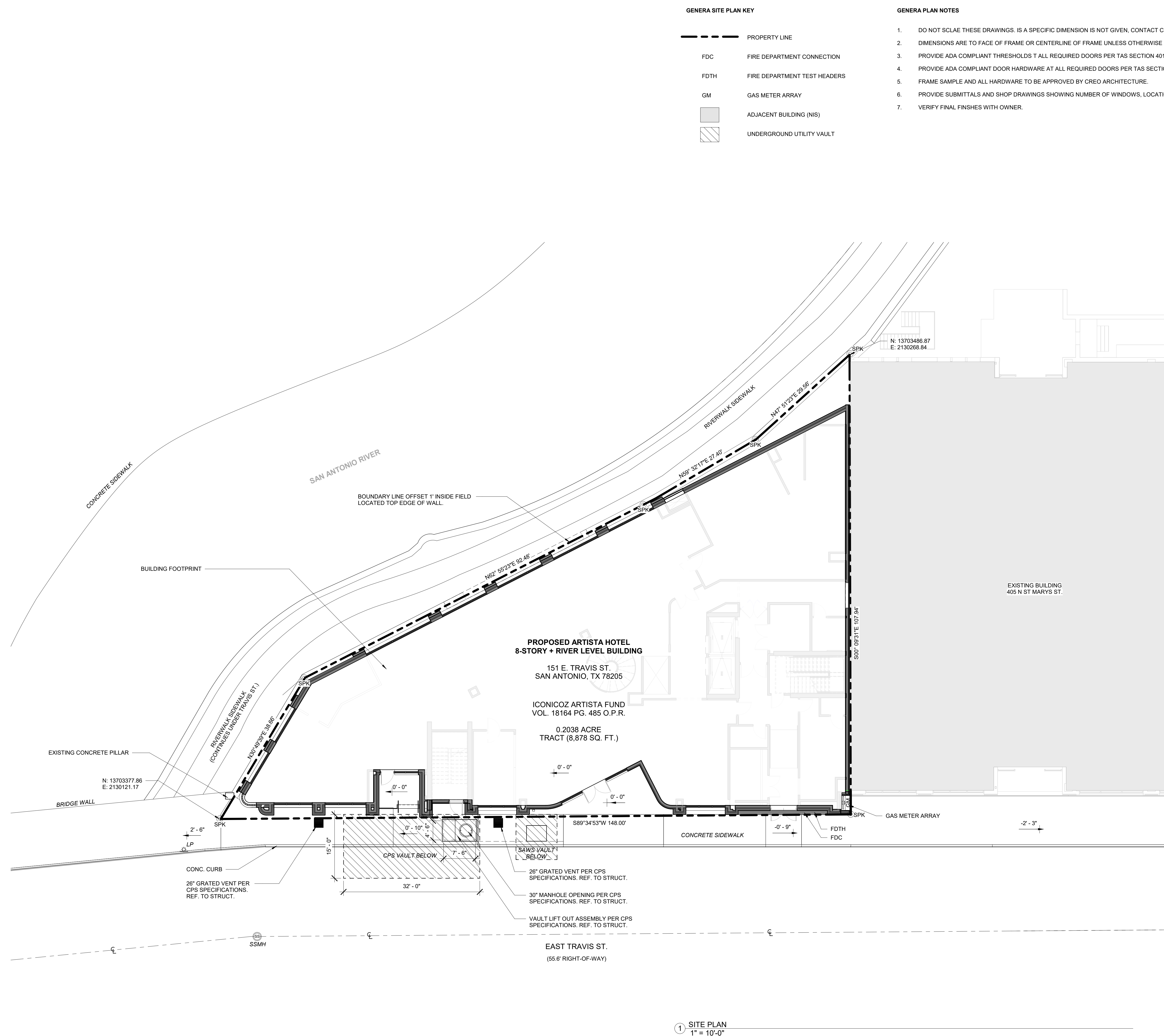




ALL REPRODUCTION & INTELLECTUAL PROPERTY RIGHTS RESERVED © 2020

SHEET	<b>A010</b>
-------	-------------



① SITE PLAN  
1" = 10'-0"

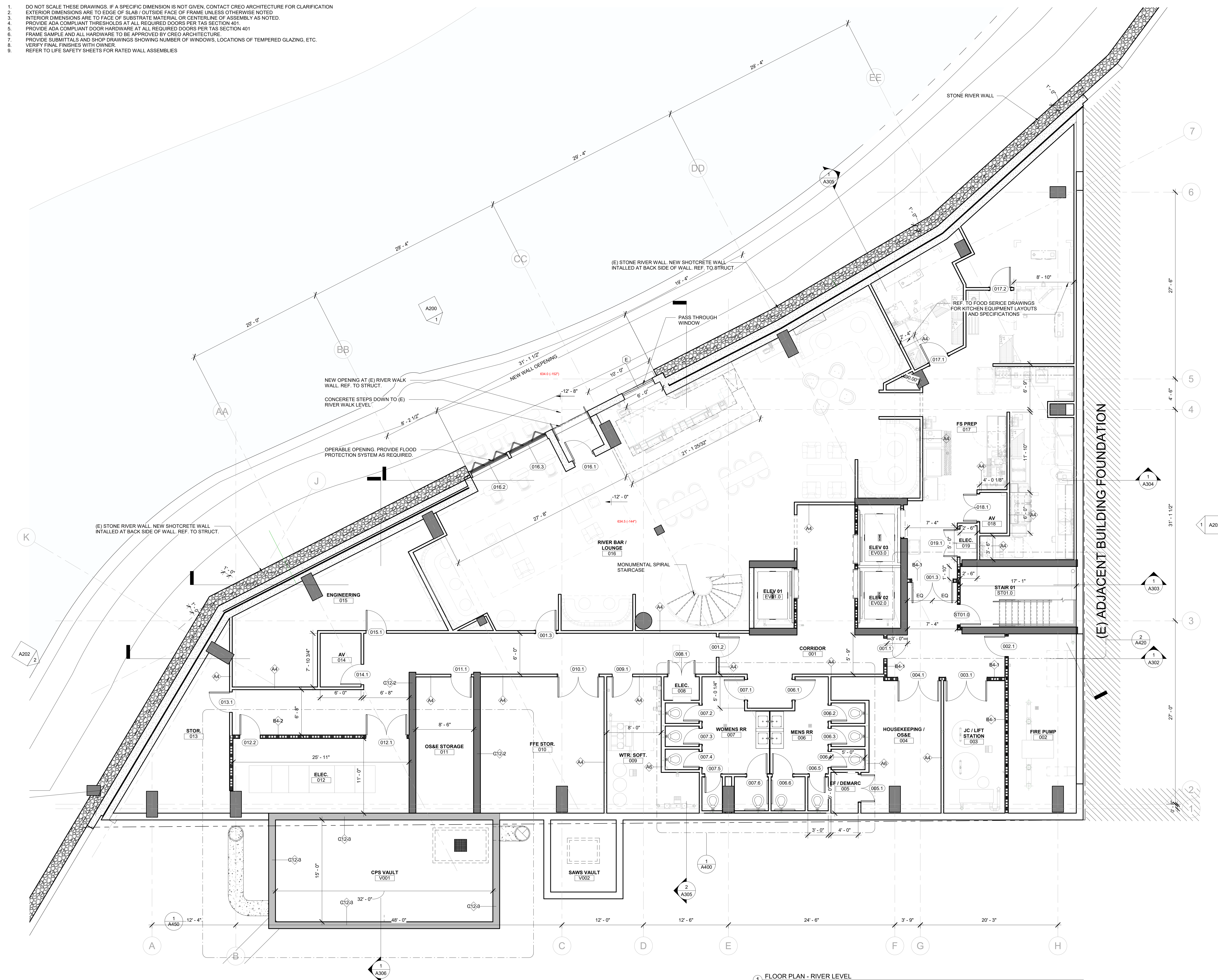




ALL REPRODUCTION & INTELLECTUAL PROPERTY RIGHTS RESERVED © 2020

SHEET	<b>A100</b>
-------	-------------

1. DO NOT SCALE THESE DRAWINGS. IF A SPECIFIC DIMENSION IS NOT GIVEN, CONTACT CREO ARCHITECTURE FOR CLARIFICATION.
2. EXTERIOR DIMENSIONS ARE TO EDGE OF SLAB/ OUTSIDE FACE OF FRAME UNLESS OTHERWISE NOTED
3. INTERIOR DIMENSIONS ARE TO FACE OF SUBSTRATE MATERIAL, OR CENTERLINE OF ASSEMBLY AS NOTED.
4. PROVIDE ADA COMPLIANT THRESHOLDS AT ALL REQUIRED DOORS PER TAS SECTION 401.
5. PROVIDE ADA COMPLIANT DOOR HARDWARE AT ALL REQUIRED DOORS PER TAS SECTION 401
6. FRAME SAMPLE AND ALL HARDWARE TO BE APPROVED BY CREO ARCHITECTURE.
7. PROVIDE SUBMITTALS AND SHOP DRAWINGS SHOWING NUMBER OF WINDOWS, LOCATIONS OF TEMPORARY GLAZING, ETC.
8. VERIFY FINAL FINISHES WITH OWNER.
9. REFER TO LIFE SAFETY SHEETS FOR RATED WALL ASSEMBLIES



① FLOOR PLAN - RIVER LEVEL  
3/16" = 1'-0"





ALL REPRODUCTION & INTELLECTUAL PROPERTY RIGHTS RESERVED © 2020

ACCESSIBILITY REVIEW  
Accessibility Unlimited  
1218 E Euclid Ave.  
San Antonio, TX 78212

PROFESSIONAL SEAL

REVISIONS

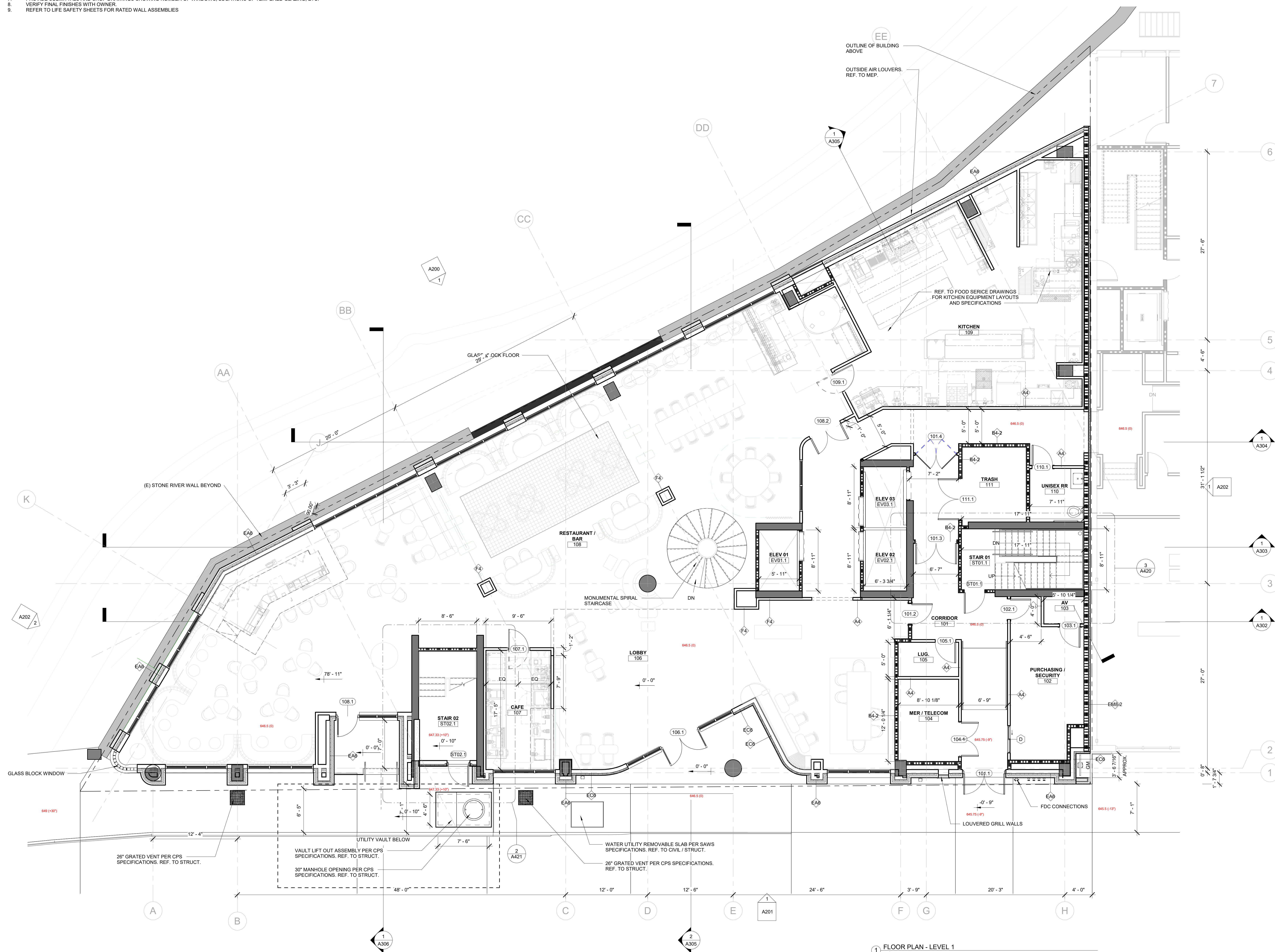
\*Original drawing is 30 x 42. Do not scale contents of this drawing

1980 1985 1990 1995 2000 2005 2010 2015 2020 2025

(a) (b)

SHEET	<b>A101</b>
-------	-------------

1. DO NOT SCALE THESE DRAWINGS. IF A SPECIFIC DIMENSION IS NOT GIVEN, CONTACT CREO ARCHITECTURE FOR CLARIFICATION
2. EXTERIOR DIMENSIONS ARE TO EDGE OF SLAB / OUTSIDE FACE OF FRAME UNLESS OTHERWISE NOTED
3. INTERIOR DIMENSIONS ARE TO FACE OF SUBSTRATE MATERIAL, OR CENTERLINE OF ASSEMBLY AS NOTED.
4. PROVIDE ADA COMPLIANT THRESHOLDS AT ALL REQUIRED DOORS PER TAS SECTION 401.
5. PROVIDE ADA COMPLIANT DOOR HARDWARE AT ALL REQUIRED DOORS PER TAS SECTION 401
6. FRAME SAMPLE AND ALL HARDWARE TO BE APPROVED BY CREO ARCHITECTURE
7. PROVIDE SUBTITLES AND SHOP DRAWINGS SHOWING NUMBER OF WINDOWS, LOCATIONS OF TEMPERED GLAZING, ETC.
8. VERIFY FINAL FINISHES WITH OWNER
9. REFER TO LIFE SAFETY SHEETS FOR RATED WALL ASSEMBLIES





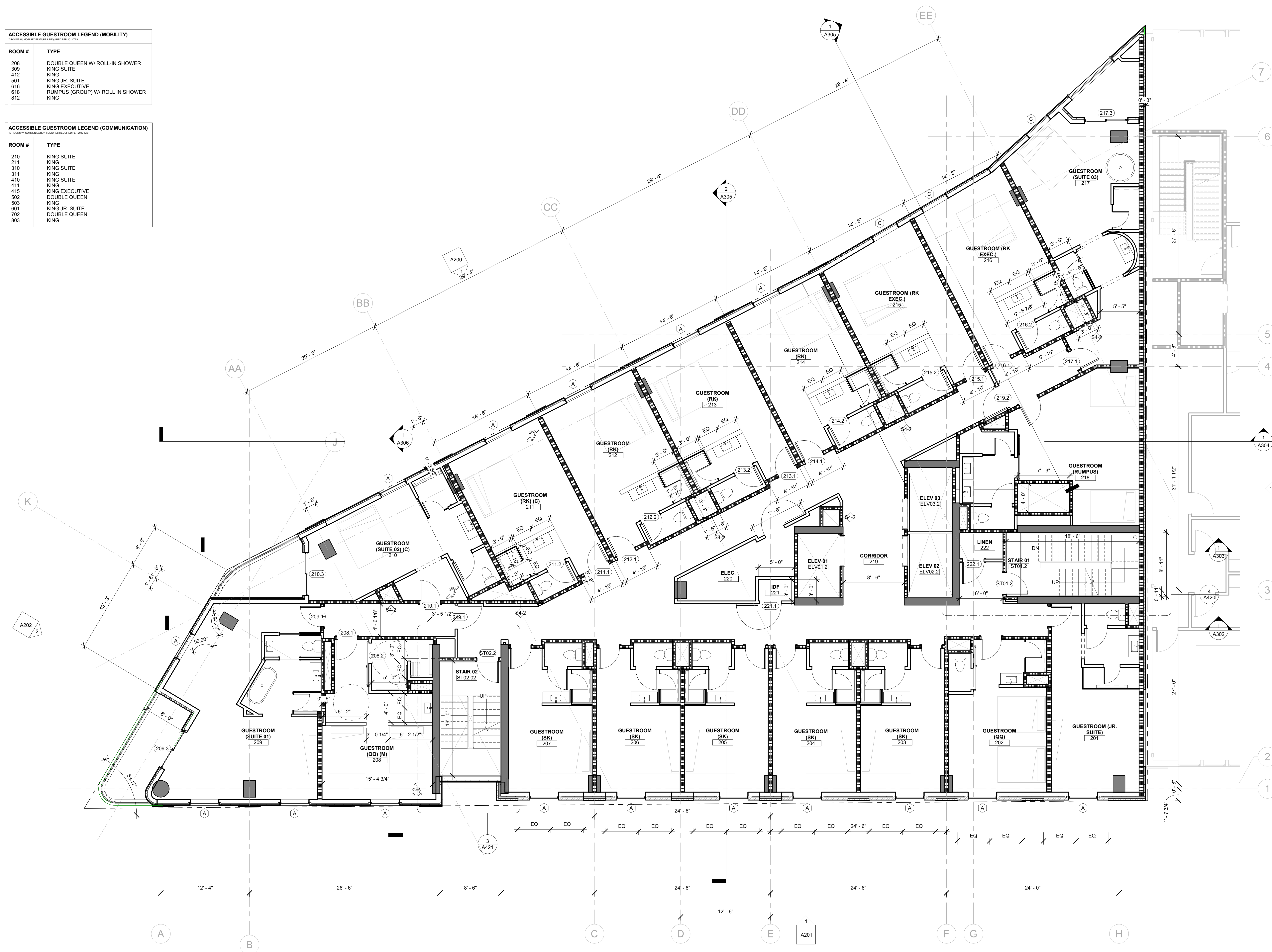


ALL REPRODUCTION & INTELLECTUAL PROPERTY RIGHTS RESERVED © 2020

SHEET	<b>A102</b>
-------	-------------

1. DO NOT SCALE THESE DRAWINGS. IF A SPECIFIC DIMENSION IS NOT GIVEN, CONTACT CREO ARCHITECTURE FOR CLARIFICATION.
2. EXTERIOR DIMENSIONS ARE TO EDGE OF SLAB / OUTSIDE FACE OF FRAME UNLESS OTHERWISE NOTED.
3. INTERIOR DIMENSIONS ARE TO FACE OF SUBSTRATE MATERIAL, OR CENTERLINE OF ASSEMBLY AS NOTED.
4. PROVIDE ADA COMPLIANT THRESHOLDS AT ALL REQUIRED DOORS PER TAS SECTION 401.
5. PROVIDE ADA COMPLIANT DOOR HARDWARE AT ALL REQUIRED DOORS PER TAS SECTION 401.
6. FRAME SAMPLE AND ALL HARDWARE TO BE APPROVED BY CREO ARCHITECTURE.
7. PROVIDE SUBMITTALS AND SHOP DRAWINGS SHOWING NUMBER OF WINDOWS, LOCATIONS OF TEMPERED GLAZING, ETC.
8. VERIFY FINAL FINISHES WITH OWNER.
9. REFER TO LIFE SAFETY SHEETS FOR RATED WALL ASSEMBLIES.

ACCESSIBLE GUESTROOM LEGEND (COMMUNICATION)	
* INCLUDES 8 COMMUNICATIONS MATERIALS (SPEAKER, MICROPHONE AND ONE	
ROOM #	TYPE
210	KING SUITE
211	KING
310	KING SUITE
311	KING
410	KING SUITE
411	KING
415	KING EXECUTIVE
502	DOUBLE QUEEN
503	KING
601	KING JR. SUITE
702	DOUBLE QUEEN
803	KING



① FLOOR PLAN - LEVEL 2  
3/16" = 1'-0"





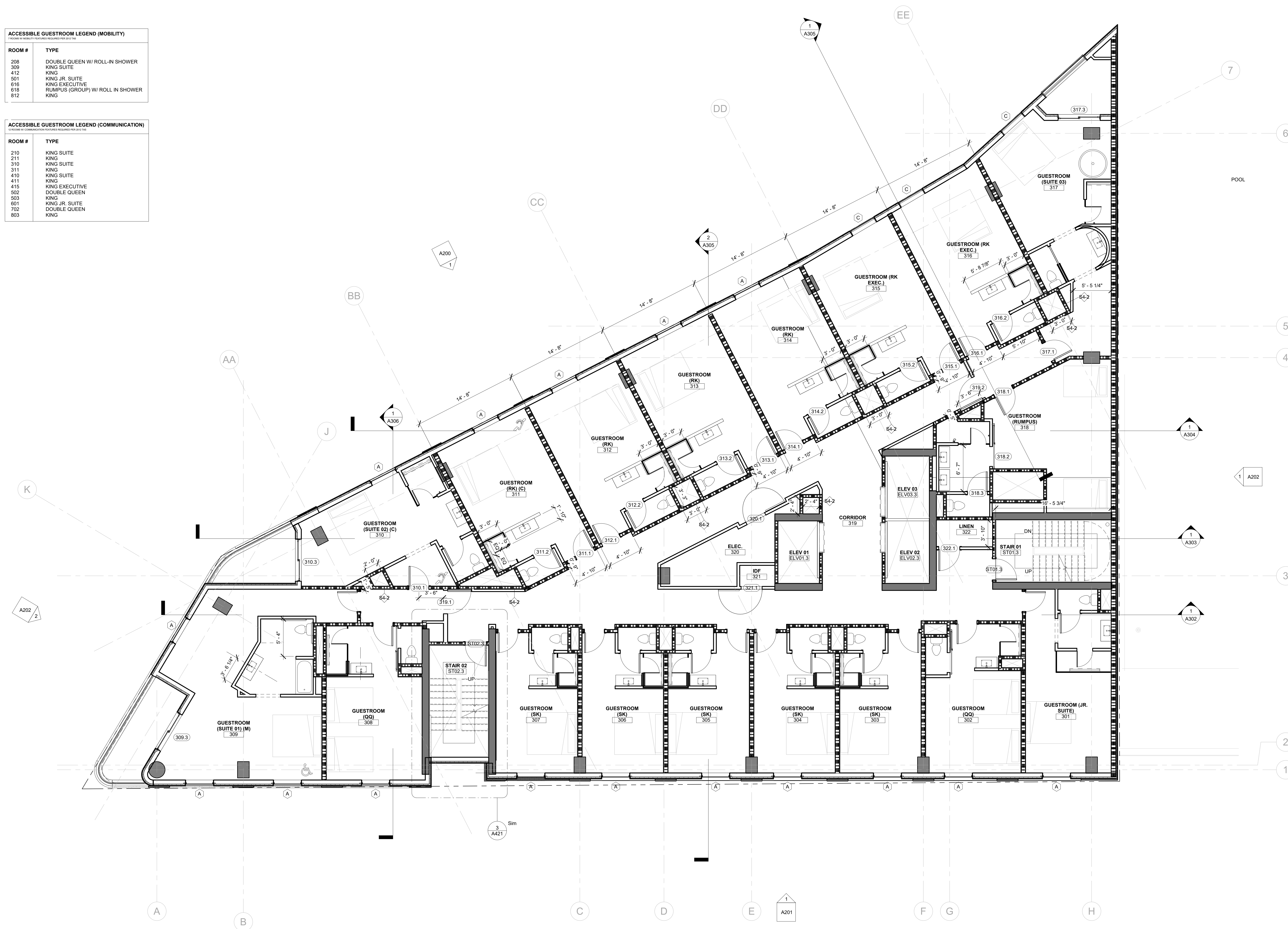
ALL REPRODUCTION & INTELLECTUAL PROPERTY RIGHTS RESERVED © 2020

ACCESSIBILITY REVIEW  
Accessibility Unlimited  
1218 E Euclid Ave.  
San Antonio, TX 78212

SHEET	<b>A103</b>
-------	-------------

1. DO NOT SCALE THESE DRAWINGS. IF A SPECIFIC DIMENSION IS NOT GIVEN, CONTACT CREO ARCHITECTURE FOR CLARIFICATION.
2. EXTERIOR DIMENSIONS ARE TO EDGE OF SLAB / OUTSIDE FACE OF FRAME UNLESS OTHERWISE NOTED.
3. INTERIOR DIMENSIONS ARE TO FACE OF SUBSTRATE MATERIAL, OR CENTERLINE OF ASSEMBLY AS NOTED.
4. PROVIDE ADA COMPLIANT THRESHOLDS AT ALL REQUIRED DOORS PER TAS SECTION 401.
5. PROVIDE ADA COMPLIANT DOOR HARDWARE AT ALL REQUIRED DOORS PER TAS SECTION 401.
6. FRAME SAMPLE AND ALL HARDWARE TO BE APPROVED BY CREO ARCHITECTURE.
7. PROVIDE SUBMITTALS AND SHOP DRAWINGS SHOWING NUMBER OF WINDOWS, LOCATIONS OF TEMPERED GLAZING, ETC.
8. VERIFY FINAL FINISHES WITH OWNER.
9. REFER TO LIFE SAFETY SHEETS FOR RATED WALL ASSEMBLIES.

ACCESSIBLE GUESTROOM LEGEND (COMMUNICATION)	
* ROOMS ARE CURRENTLY OPEN FOR OCCUPANCY THROUGH 2012-2013	
ROOM #	TYPE
210	KING SUITE
211	KING
310	KING SUITE
311	KING
410	KING SUITE
411	KING
415	KING EXECUTIVE
502	DOUBLE QUEEN
503	KING
601	KING JR. SUITE
702	DOUBLE QUEEN
803	KING



① FLOOR PLAN - LEVEL 3  
3/16" = 1'-0"





ALL REPRODUCTION & INTELLECTUAL PROPERTY RIGHTS RESERVED © 2020

CIVIL  
KFW Engineers & Surveying  
3421 Paesanos Pkwy Suite 200  
San Antonio, TX 78231

LANDSCAPE  
Coral Studio  
1432 S. St. Mary's St.  
San Antonio, TX 78210

STRUCTURAL  
DUNAWAY  
118 Broadway Suite 201  
San Antonio, Texas 78205

MECHANICAL, ELECTRICAL & PLUMBING  
Cleary Zimmermann Engineers  
1344 S. Flores, Suite 101  
San Antonio, Texas 78204

INTERIOR DESIGN  
CREO  
51 ESSEX ST.  
SAN ANTONIO, TX 78210

LIFE SAFETY / CODE CONSULTANT  
Fire Protection Consulting Group  
14439 NW Military Hwy, Suite 108  
San Antonio, TX 78231

ACCESSIBILITY REVIEW  
Accessibility Unlimited  
1218 E Euclid Ave.  
San Antonio, TX 78212

**NAME:** ICONICOZ ARTISTA FUND LLC  
**PROJECT ADDRESS:** 151 E. TRAVIS ST.  
SAN ANTONIO, TX

ARTISTA HOTEL

**HDRC FINAL APPROVAL**

PROFESSIONAL SEAL

**PRELIMINARY**  
**NOT FOR CONSTRUCTION**

[illegible]

\*Original drawing is 30 x 42. Do not scale contents of this drawing.

SHEET TITLE

---

FLOOR PLAN - LVL 4 (TYP.  
GUEST LEVEL)

PROJEST: 541004

ISSUE DATE: 1994

[illegible]

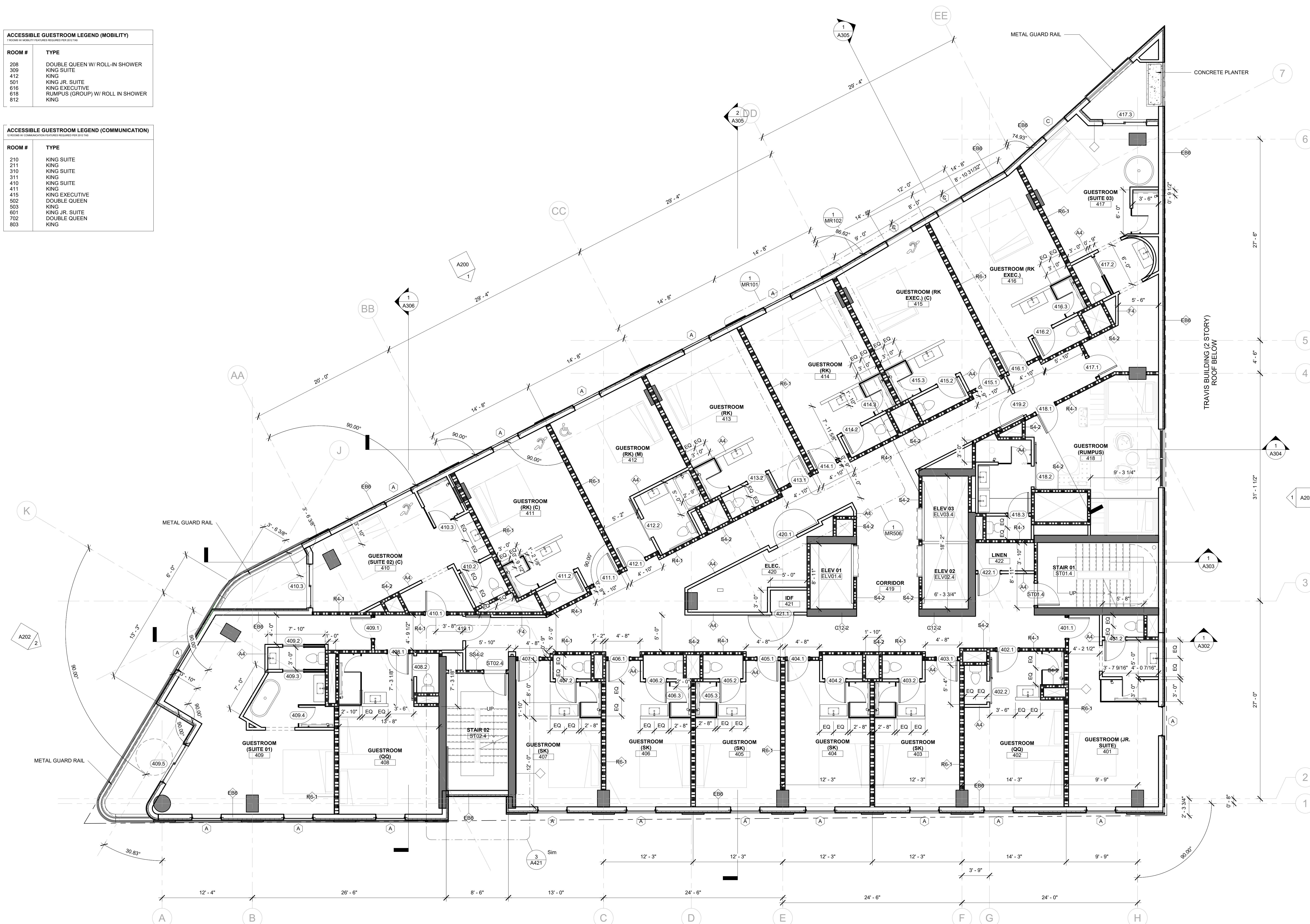
DOI: 10.1002/for

SHEET **A104**

1 DO NOT SCALE THESE DRAWINGS. IF A SPECIFIC DIMENSION IS NOT GIVEN, CONTACT CREO ARCHITECTURE FOR CLARIFICATION  
2 EXTERIOR DIMENSIONS ARE TO EDGE OF SLAB / OUTSIDE FACE OF FRAME UNLESS OTHERWISE NOTED  
3 INTERIOR DIMENSIONS ARE TO FACE OF SUBSTRATE MATERIAL, OR CENTERLINE OF ASSEMBLY AS NOTED.  
4 PROVIDE ADA COMPLIANT THRESHOLDS AT ALL REQUIRED DOORS PER TAS SECTION 401.  
5 PROVIDE ADA COMPLIANT DOOR HARDWARE AT ALL REQUIRED DOORS PER TAS SECTION 401  
6 FRAME SAMPLE AND ALL HARDWARE TO BE APPROVED BY CREO ARCHITECTURE.  
7 PROVIDE SUBMITTALS AND SHOP DRAWINGS SHOWING NUMBER OF WINDOWS, LOCATIONS OF TEMPERED GLAZING, ETC.  
8 VERIFY FINAL FINISHES WITH OWNER  
9 REFER TO LIFE SAFETY SHEETS FOR RATED WALL ASSEMBLIES

ACCESSIBLE GUESTROOM LEGEND (MOBILITY)	
ROOMS W/ MOBILITY FEATURES REQUIRED PER 2012 IAS	
ROOM #	TYPE
208	DOUBLE QUEEN W/ ROLL-IN SHOWER
309	KING SUITE
412	KING
501	KING JR. SUITE
616	KING EXECUTIVE
618	RUMPUS (GROUP) W/ ROLL IN SHOWER
812	KING

ACCESSIBLE GUESTROOM LEGEND (COMMUNICATION)	
ROOM #	TYPE
210	KING SUITE
211	KING
310	KING SUITE
311	KING
410	KING SUITE
411	KING
415	KING EXECUTIVE
502	DOUBLE QUEEN
503	KING
601	KING JR. SUITE
702	DOUBLE QUEEN
803	KING



1 FLOOR PLAN - LEVEL 4-7 TYP  
3/16" = 1'-0"





ALL REPRODUCTION & INTELLECTUAL PROPERTY RIGHTS RESERVED © 2020

ACCESSIBILITY REVIEW  
Accessibility Unlimited  
1218 E Euclid Ave.  
San Antonio, TX 78212

1. DO NOT SCALE THESE DRAWINGS. IF A SPECIFIC DIMENSION IS NOT GIVEN, CONTACT CREO ARCHITECTURE FOR CLARIFICATION.
2. EXTERIOR DIMENSIONS ARE TO EDGE OF SLAB / OUTSIDE FACE OF FRAME UNLESS OTHERWISE NOTED.
3. INTERIOR DIMENSIONS ARE TO FACE OF SUBSTRATE MATERIAL, OR CENTERLINE OF ASSEMBLY AS NOTED.
4. PROVIDE ADA COMPLIANT THRESHOLDS AT ALL REQUIRED DOORS PER TAS SECTION 401.
5. PROVIDE ADA COMPLIANT DOOR HARDWARE AT ALL REQUIRED DOORS PER TAS SECTION 401.
6. FRAME SAMPLE AND ALL HARDWARE TO BE APPROVED BY CREO ARCHITECTURE.
7. PROVIDE SUBMITTALS AND SHOP DRAWINGS SHOWING NUMBER OF WINDOWS, LOCATIONS OF TEMPERED GLAZING, ETC.
8. VERIFY FINAL FINISHES WITH OWNER.
9. REFER TO LIFE SAFETY SHEETS FOR RATED WALL ASSEMBLIES.

ACCESSIBLE GUESTROOM LEGEND (COMMUNICATION)	
ROOM #	TYPE
210	KING SUITE
211	KING
310	KING SUITE
311	KING
410	KING SUITE
411	KING
415	KING EXECUTIVE
502	DOUBLE QUEEN
603	KING
601	KING JR. SUITE
702	DOUBLE QUEEN
803	KING



① FLOOR PLAN - LEVEL 5  
3/16" = 1'-0"





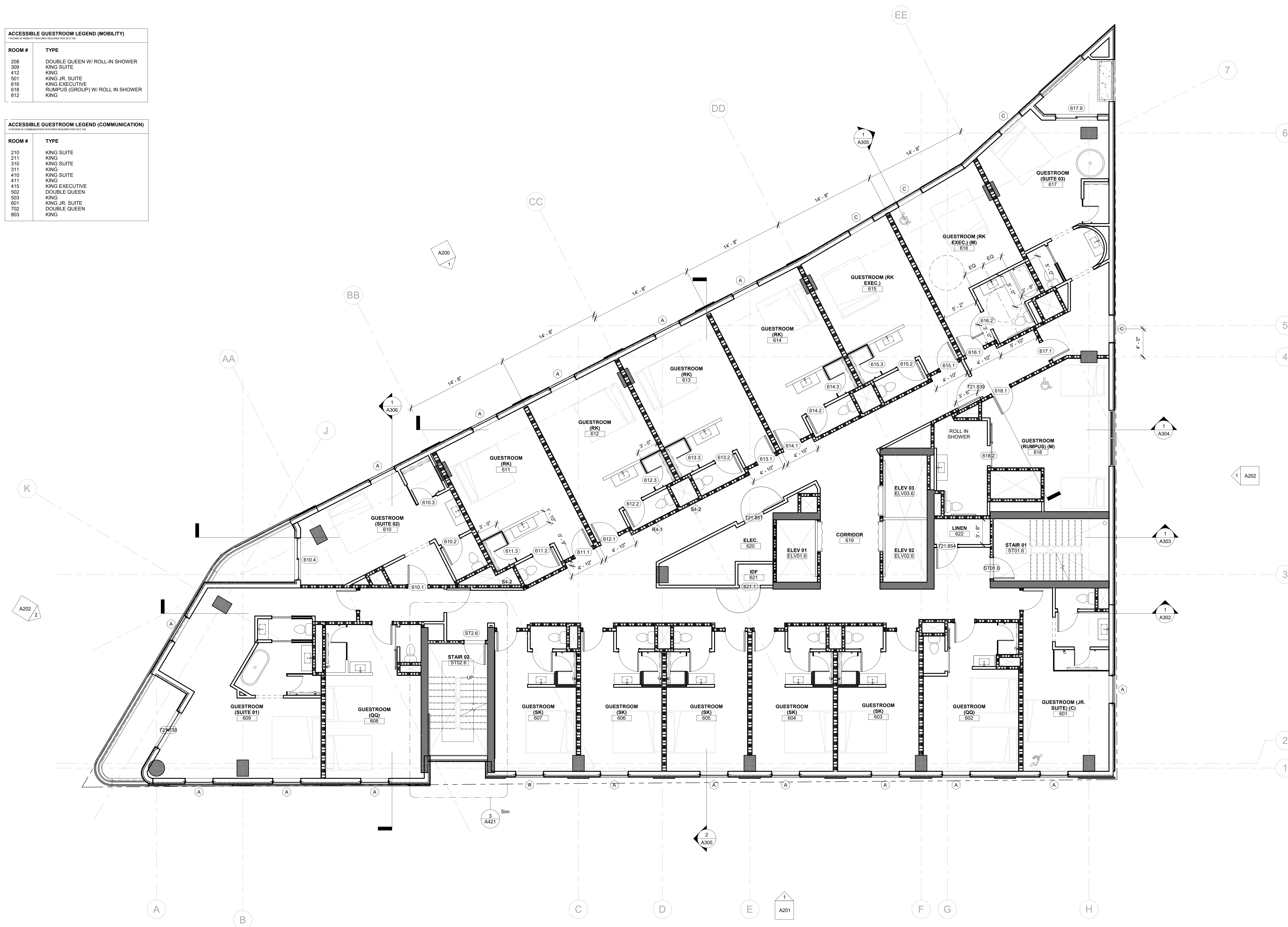
ALL REPRODUCTION & INTELLECTUAL PROPERTY RIGHTS RESERVED © 2020

ACCESSIBILITY REVIEW  
Accessibility Unlimited  
1218 E Euclid Ave.  
San Antonio, TX 78212

SHEET **A106**

1. DO NOT SCALE THESE DRAWINGS. IF A SPECIFIC DIMENSION IS NOT GIVEN, CONTACT CREO ARCHITECTURE FOR CLARIFICATION.
2. EXTERIOR DIMENSIONS ARE TO EDGE OF SLAB/ OUTSIDE FACE OF FRAME UNLESS OTHERWISE NOTED.
3. INTERIOR DIMENSIONS ARE TO FACE OF SUBSTRATE MATERIAL, OR CENTERLINE OF ASSEMBLY AS NOTED.
4. PROVIDE ADA COMPLIANT THRESHOLDS AT ALL REQUIRED DOORS PER TAS SECTION 401.
5. PROVIDE ADA COMPLIANT DOOR HARDWARE AT ALL REQUIRED DOORS PER TAS SECTION 401.
6. FRAME SAMPLE AND ALL HARDWARE TO BE APPROVED BY CREO ARCHITECTURE.
7. PROVIDE SUBMITTALS AND SHOP DRAWINGS SHOWING NUMBER OF WINDOWS, LOCATIONS OF TEMPERED GLAZING, ETC.
8. VERIFY FINAL FINISHES WITH OWNER.
9. REFER TO LIFE SAFETY SHEETS FOR RATED WALL ASSEMBLIES.

ACCESSIBLE GUESTROOM LEGEND (COMMUNICATION)	
ROOM #	TYPE
210	KING SUITE
211	KING
310	KING SUITE
311	KING
410	KING SUITE
411	KING
415	KING EXECUTIVE
502	DOUBLE QUEEN
603	KING
601	KING JR. SUITE
702	DOUBLE QUEEN
803	KING



1 FLOOR PLAN - LEVEL 6  
3/16" = 1'-0"





ALL REPRODUCTION & INTELLECTUAL PROPERTY RIGHTS RESERVED © 2020

ACCESSIBILITY REVIEW  
Accessibility Unlimited  
1218 E Euclid Ave.  
San Antonio, TX 78212

SHEET	<b>A107</b>
-------	-------------

1. DO NOT SCALE THESE DRAWINGS. IF A SPECIFIC DIMENSION IS NOT GIVEN, CONTACT CREO ARCHITECTURE FOR CLARIFICATION.
2. EXTERIOR DIMENSIONS ARE TO EDGE OF SLAB/ OUTSIDE FACE OF FRAME UNLESS OTHERWISE NOTED.
3. INTERIOR DIMENSIONS ARE TO FACE OF SUBSTRATE MATERIAL, OR CENTERLINE OF ASSEMBLY AS NOTED.
4. PROVIDE ADA COMPLIANT THRESHOLDS AT ALL REQUIRED DOORS PER TAS SECTION 401.
5. PROVIDE ADA COMPLIANT DOOR HARDWARE AT ALL REQUIRED DOORS PER TAS SECTION 401.
6. FRAME SAMPLE AND ALL HARDWARE TO BE APPROVED BY CREO ARCHITECTURE.
7. PROVIDE SUBTITLES AND SHOP DRAWINGS SHOWING NUMBER OF WINDOWS, LOCATIONS OF TEMPERED GLAZING, ETC.
8. VERIFY FINAL FINISHES WITH OWNER.
9. REFER TO LIFE SAFETY SHEETS FOR RATED WALL ASSEMBLIES.

ACCESSIBLE GUESTROOM LEGEND (COMMUNICATION)	
ROOM #	TYPE
210	KING SUITE
211	KING
310	KING SUITE
311	KING
410	KING SUITE
411	KING
415	KING EXECUTIVE
502	DOUBLE QUEEN
603	KING
601	KING JR. SUITE
702	DOUBLE QUEEN
803	KING



1 FLOOR PLAN - LEVEL 7  
3/16" = 1'-0"





ALL REPRODUCTION & INTELLECTUAL PROPERTY RIGHTS RESERVED © 2020

CIVIL  
KFW Engineers & Surveying  
3421 Paesanos Pkwy Suite 200  
San Antonio, TX 78231

LANDSCAPE  
Coral Studio  
1432 S. St. Mary's St.  
San Antonio, TX 78210

STRUCTURAL  
DUNAWAY  
118 Broadway Suite 201  
San Antonio, Texas 78205

MECHANICAL, ELECTRICAL & PLUMBING  
Cleary Zimmermann Engineers  
1344 S. Flores, Suite 101  
San Antonio, Texas 78204

INTERIOR DESIGN  
CREO  
51 ESSEX ST.  
SAN ANTONIO, TX 78210

LIFE SAFETY / CODE CONSULTANT  
Fire Protection Consulting Group  
14439 NW Military Hwy, Suite 108  
San Antonio, TX 78231

ACCESSIBILITY REVIEW  
Accessibility Unlimited  
1218 E Euclid Ave.  
San Antonio, TX 78212

**NAME:** ICONICOZ ARTISTA FUND LLC  
**PROJECT ADDRESS:** 151 E. TRAVIS ST.  
SAN ANTONIO, TX

ARTISTA HOTEL

PROJECT KEY

PROFESSIONAL SEAL

REVISIONS

\*Original drawing is 30 x 42. Do not scale contents of this drawing

FLOOR PLAN - LVL 8

BDO 1503 54100

ISSUE DATE: 10/10

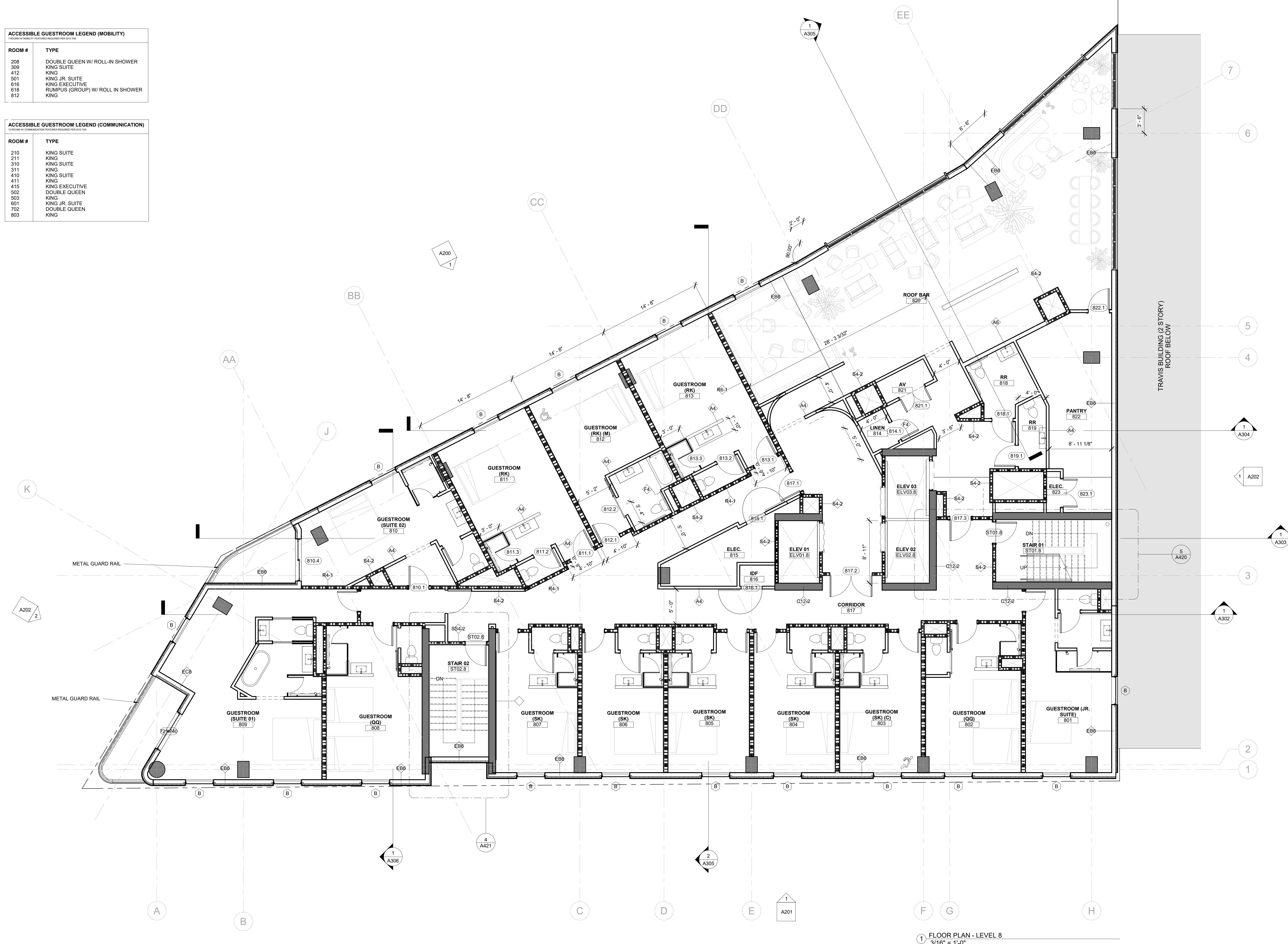
[illegible]

SHEET **A108**

1. DO NOT SCALE THESE DRAWINGS. IF A SPECIFIC DIMENSION IS NOT GIVEN, CONTACT CREO ARCHITECTURE FOR CLARIFICATION.
2. EXTERIOR DIMENSIONS ARE TO EDGE OF SLAB/ OUTSIDE FACE OF FRAME UNLESS OTHERWISE NOTED.
3. INTERIOR DIMENSIONS ARE TO FACE OF SUBSTRATE MATERIAL, OR CENTERLINE OF ASSEMBLY AS NOTED.
4. PROVIDE ADA COMPLIANT THRESHOLDS AT ALL REQUIRED DOORS PER TAS SECTION 401.
5. PROVIDE ADA COMPLIANT DOOR HARDWARE AT ALL REQUIRED DOORS PER TAS SECTION 401.
6. FRAME SAMPLE AND ALL HARDWARE TO BE APPROVED BY CREO ARCHITECTURE.
7. PROVIDE SUBMITTALS AND SHOP DRAWINGS SHOWING NUMBER OF WINDOWS, LOCATIONS OF TEMPERED GLAZING, ETC.
8. VERIFY FINAL FINISHES WITH OWNER.
9. REFER TO UFE SAFETY SHEETS FOR RATED WALL ASSEMBLIES.

ACCESSIBLE GUESTROOM LEGEND (MOBILITY)	
7 ROOMS W/ MOBILITY FEATURES REQUIRED FOR 2012 ADA	
ROOM #	TYPE
208	DOUBLE QUEEN W/ ROLL-IN SHOWER
309	KING SUITE
412	KING
501	KING JR. SUITE
616	KING EXECUTIVE
618	RUMPUS (GROUP) W/ ROLL IN SHOWER
812	KING

ACCESSIBLE GUESTROOM LEGEND (COMMUNICATION)	
ROOM #	TYPE
210	KING SUITE
211	KING
310	KING SUITE
311	KING
410	KING SUITE
411	KING
415	KING EXECUTIVE
502	DOUBLE QUEEN
503	KING
601	KING JR. SUITE
702	DOUBLE QUEEN
803	KING



1 FLOOR PLAN - LEVEL 8  
3/16" = 1'-0"





ALL REPRODUCTION & INTELLECTUAL PROPERTY RIGHTS RESERVED © 2020

ACCESSIBILITY REVIEW  
Accessibility Unlimited  
1218 E Euclid Ave.  
San Antonio, TX 78212

**PROJECT ADDRESS:** 151 E. TRAVIS ST.  
SAN ANTONIO, TX 78205

ARTISTA HOTEL

**HDRC FINAL APPROVAL**

**PRELIMINARY**  
**NOT FOR CONSTRUCTION**

[illegible]

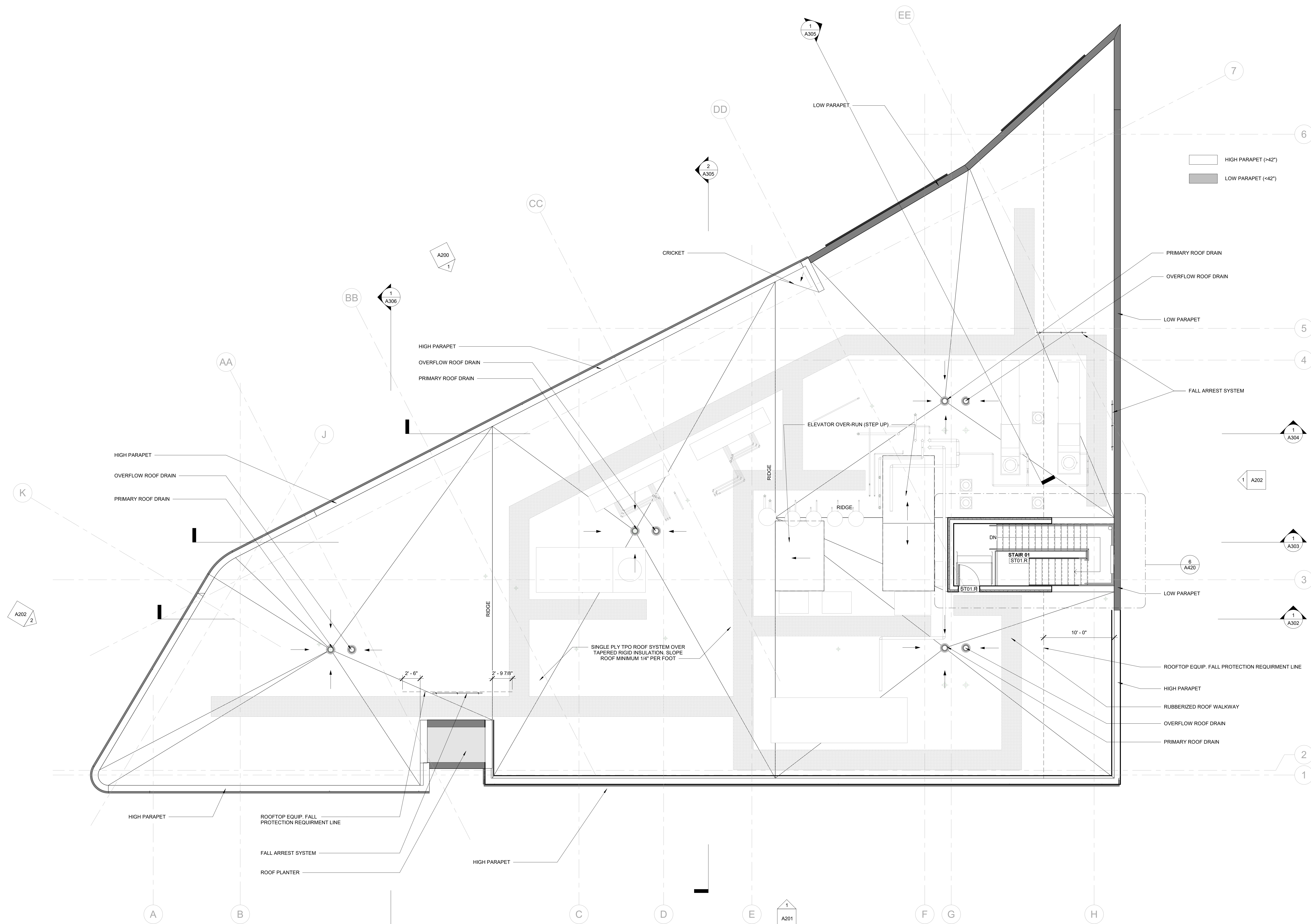
SHEET TITLE

---

ROOF PLAN - MAIN

CHECKED BY: 00

SHEET	<b>A110</b>
-------	-------------



1 ROOF PLAN - MAIN  
3/16" = 1'-0"





[www.creoarc.com](http://www.creoarc.com)

ALL REPRODUCTION & INTELLECTUAL PROPERTY RIGHTS RESERVED © 2020

ACCESSIBILITY REVIEW  
Accessibility Unlimited  
118 E Euclid Ave.  
San Antonio, TX 78212

**PROJECT ADDRESS:** 151 E. TRAVIS ST.  
SAN ANTONIO, TX 78205

ARTISTA HOTEL

## HDRC FINAL APPROVAL

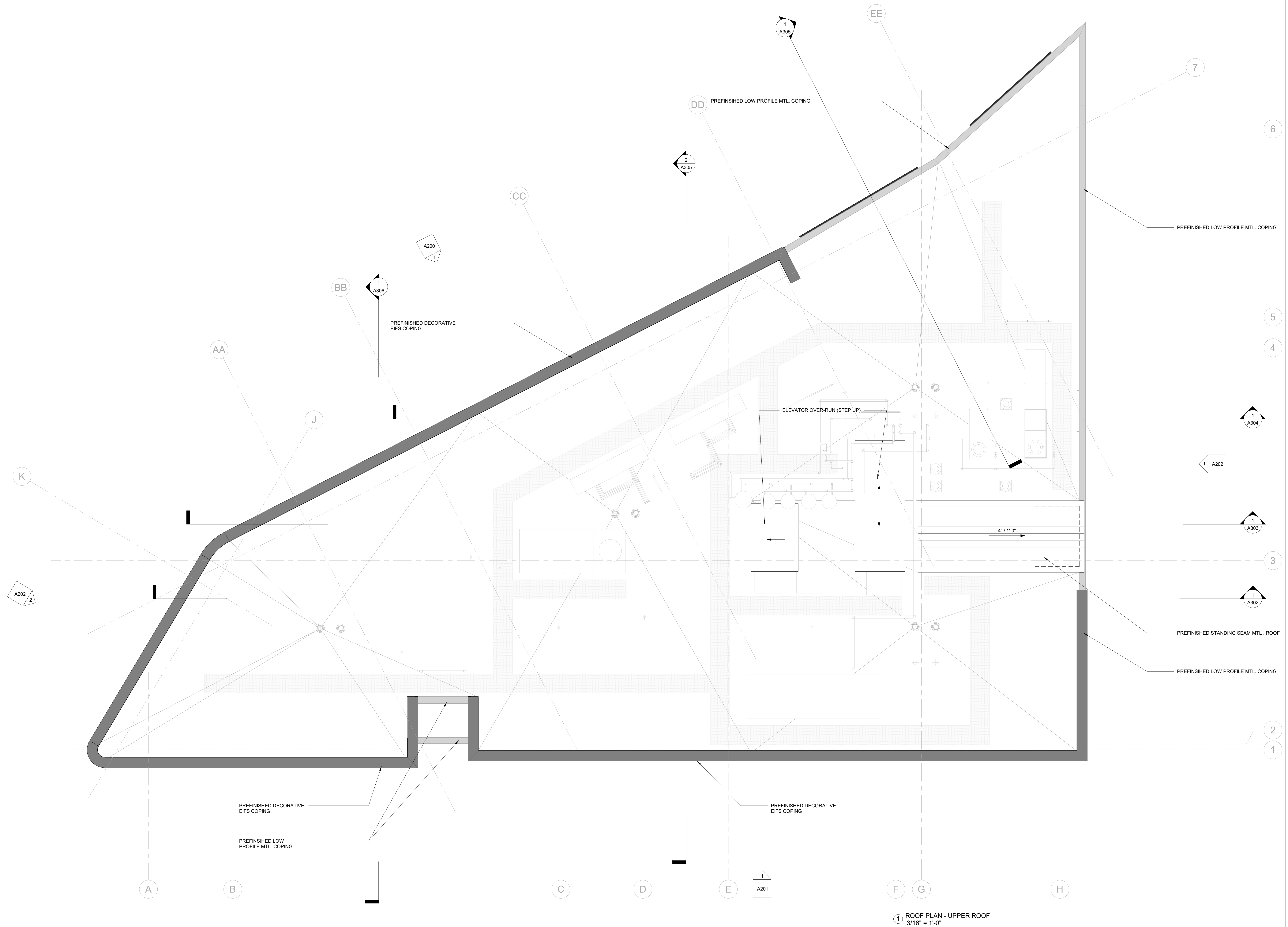
**PRELIMINARY**  
**NOT FOR CONSTRUCTION**

[illegible]

### ROOF PLAN - UPPER

CHECKED BY: SS

SHEET **A111**







P.210.943.3777 E. [info@creoarc.com](mailto:info@creoarc.com)

www.creoarc.com

ALL REPRODUCTION & INTELLECTUAL PROPERTY RIGHTS RESERVED © 2020

## SIGN TEAM

LANDSCAPE  
 ral Studio  
 32 S. St. Mary's St.  
 n Antonio, TX 78210

MECHANICAL, ELECTRICAL & PLUMBING  
Leary Zimmermann Engineers  
44 S. Flores, Suite 101  
San Antonio, Texas 78204

E SAFETY / CODE CONSULTANT  
 e Protection Consulting Group  
 439 NW Military Hwy, Suite 108  
 n Antonio, TX 78231

**PROJECT ADDRESS:** 151 E. TRAVIS ST.  
SAN ANTONIO, TX 78205

PROJECT NAME

## HDRC FINAL APPROVAL

## SUBJECT KEY

PROFESSIONAL SEAL

**PRELIMINARY**  
**NOT FOR CONSTRUCTION**

VISIONS

[illegible]

Original drawing is 30 x 42. Do not scale contents of this drawing

HEET TITLE

## LDG. ELEVATIONS - NORTH (RIVER)

## MEET INFO

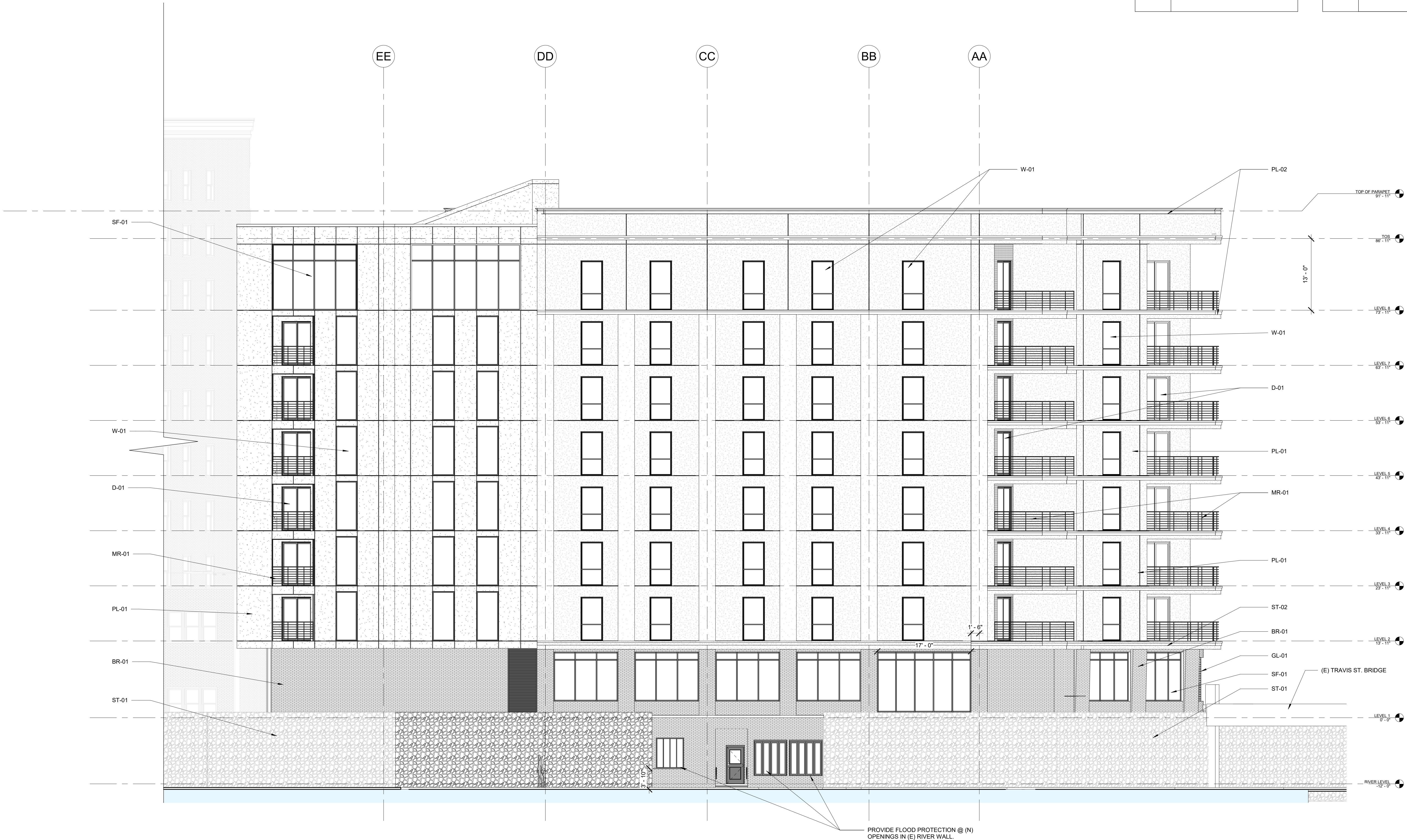
HECKED BY: SS

SHEET **A200**

### EXTERIOR LEGEND

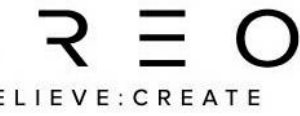
SYMBOL	DESCRIPTION
	<b>STANDARD FACE BRICK FACADE</b>
BR-01	STANDARD FACE BRICK FACADE SYSTEM W/ CONTINUOUS RIGID INSULATION, AIR GAP, AND THRU WALL FLASHING
	<b>STANDARD FACE BRICK FACADE</b>
BR-02	STANDARD FACE BRICK FACADE SYSTEM W/ CONTINUOUS RIGID INSULATOR, AIR GAP, AND THRU WALL FLASHING
	<b>EIFS FACADE (PAINT 01)</b>
PL-01	PLASTER FINISH SYSTEM W/ CONTINUOUS INSULATION
	<b>EIFS FACADE (PAINT 02)</b>
PL-02	PLASTER FINISH SYSTEM W/ CONTINUOUS INSULATION
	<b>EXISTING STONE WALL</b>
ST-01	CLEAN EXISTING STONE WALL WITH LOW PRESSURE HOT WATER WASH WITH A MILD DETERGENT. RE-POINT EXISTING MASONRY WITH MORTAR THAT MATCHES THE EXISTING IN COLOR AND COMPOSITION. COORDINATE NEW OPENINGS IN WALL AS SHOWN, REF. TO STRUCTURAL DRAWINGS.
	<b>STONE BANDING</b>
ST-02	STONE BANDING / PARAPET CAP

SYMBOL	DESCRIPTION
CT-01	CERAMIC TILE
	GLAZED DECORATIVE CERAMIC TILE
MR-01	PAINTED STEEL GUARDRAIL
	DECORATIVE PAINTED STEEL GUARDRAIL
W-01	COMPOSITE / FIBERGLASS WINDOWS
	MPOSTE / FIBERGLASS FRAMED WINDOWS. REFER TO WINDOW SCHEDULES
D-01	COMPOSITE / FIBERGLASS DOORS
	COMPOSITE / FIBERGLASS FRAMED SLIDING DOORS. REFER TO DOOR SCHEDULES
SF-01	ALUMINUM STOREFRONT
	THERMALLY BROKEN ANNOXIDIZED ALUMINUM STOREFRONT SYSTEM
GL-01	GLASS BLOCK
	GLASS BLOCK SYSTEM



1 EXTERIOR ELEVATION - NORTH  
1/8" = 1'-0"





www.creoarc.com

REPRODUCTION &amp; INTELLECTUAL PROPERTY RIGHTS RESERVED © 2020

## IGN TEAM

ACCESSIBILITY REVIEW  
Accessibility Unlimited  
8 E Euclid Ave.  
San Antonio, TX 78212

NT

**PROJECT ADDRESS:** 151 E. TRAVIS ST.  
SAN ANTONIO, TX 78205

SUBJECT NAME \_\_\_\_\_

## MDRC FINAL APPROVAL

### SUBJECT KEY

PROFESSIONAL SEAL

**PRELIMINARY**  
**NOT FOR CONSTRUCTION**

## SIONS

[illegible]

Original drawing is 30 x 42. Do not scale contents of this drawing.

ET TITLE

## ET INFO

HECKED BY: SS

## A201

### EXTERIOR LEGEND

SYMBOL	DESCRIPTION
BR-01	STANDARD FACE BRICK FAÇADE
	STANDARD FACE BRICK FAÇADE SYSTEM W/ CONTINUOUS RIGID INSULATION, AIR GAP, AND THRU WALL FLASHING
BR-02	STANDARD FACE BRICK FAÇADE
	STANDARD FACE BRICK FAÇADE SYSTEM W/ CONTINUOUS RIGID INSULATION, AIR GAP, AND THRU WALL FLASHING
PL-01	EIFS FAÇADE (PAINT 01)
	PLASTER FINISH SYSTEM W/ CONTINUOUS INSULATION
PL-02	EIFS FAÇADE (PAINT 02)
	PLASTER FINISH SYSTEM W/ CONTINUOUS INSULATION
ST-01	EXISTING STONE WALL
	CLEAN EXISTING STONE WALL WITH LOW PRESSURE, HOT WATER WASH WITH A MILD DETERGENT. RE-POINT EXISTING MASONRY WITH MORTAR THAT MATCHES THE EXISTING IN COLOR AND COMPOSITION. COORDINATE NEW OPENINGS IN WALL AS SHOWN, REF. TO STRUCTURE DRAWINGS.
ST-02	STONE BANDING
	STONE BANDING / PARAPET CAP

SYMBOL	DESCRIPTION
CT-01	CERAMIC TILE
	GLAZED DECORATIVE CERAMIC TILE
MR-01	PAINTED STEEL GUARDRAIL
	DECORATIVE PAINTED STEEL GUARDRAIL
W-01	COMPOSITE / FIBERGLASS WINDOWS
	MPOSTE / FIBERGLASS FRAMED WINDOWS. REFER TO WINDOW SCHEDULES
D-01	COMPOSITE / FIBERGLASS DOORS
	COMPOSITE / FIBERGLASS FRAMED SLIDING DOORS. REFER TO DOOR SCHEDULES
SF-01	ALUMINUM STOREFRONT
	THERMALLY BROKEN ANNOXIDIZED ALUMINUM STOREFRONT SYSTEM
GL-01	GLASS BLOCK
	GLASS BLOCK SYSTEM







P.210.943.3777 E. [info@creoarc.com](mailto:info@creoarc.com)

[www.creoarc.com](http://www.creoarc.com)

ALL REPRODUCTION & INTELLECTUAL PROPERTY RIGHTS RESERVED © 2020

## DESIGN TEAM

LANDSCAPE  
rural Studio  
32 S. St. Mary's St.  
San Antonio, TX 78210

MECHANICAL, ELECTRICAL & PLUMBING  
Leary Zimmermann Engineers  
44 S. Flores, Suite 101  
San Antonio, Texas 78204

**SAFE SAFETY / CODE CONSULTANTS**  
 Fire Protection Consulting Group  
 439 NW Military Hwy, Suite 108  
 San Antonio, TX 78231

**PROJECT ADDRESS:** 151 E. TRAVIS ST.  
SAN ANTONIO, TX 78205

PROJECT NAME

## HDRC FINAL APPROVAL

### SUBJECT KEY

PROFESSIONAL SEAL

**PRELIMINARY**  
**NOT FOR CONSTRUCTION**

VISIONS

[illegible]

Original drawing is 30 x 42. Do not scale contents of this drawing

HEET TITLE

PROJECT: 51190

SUE DATE: 10/28/22

DRAWN BY: SS

CHECKED BY: SS

SHEET | **A202**

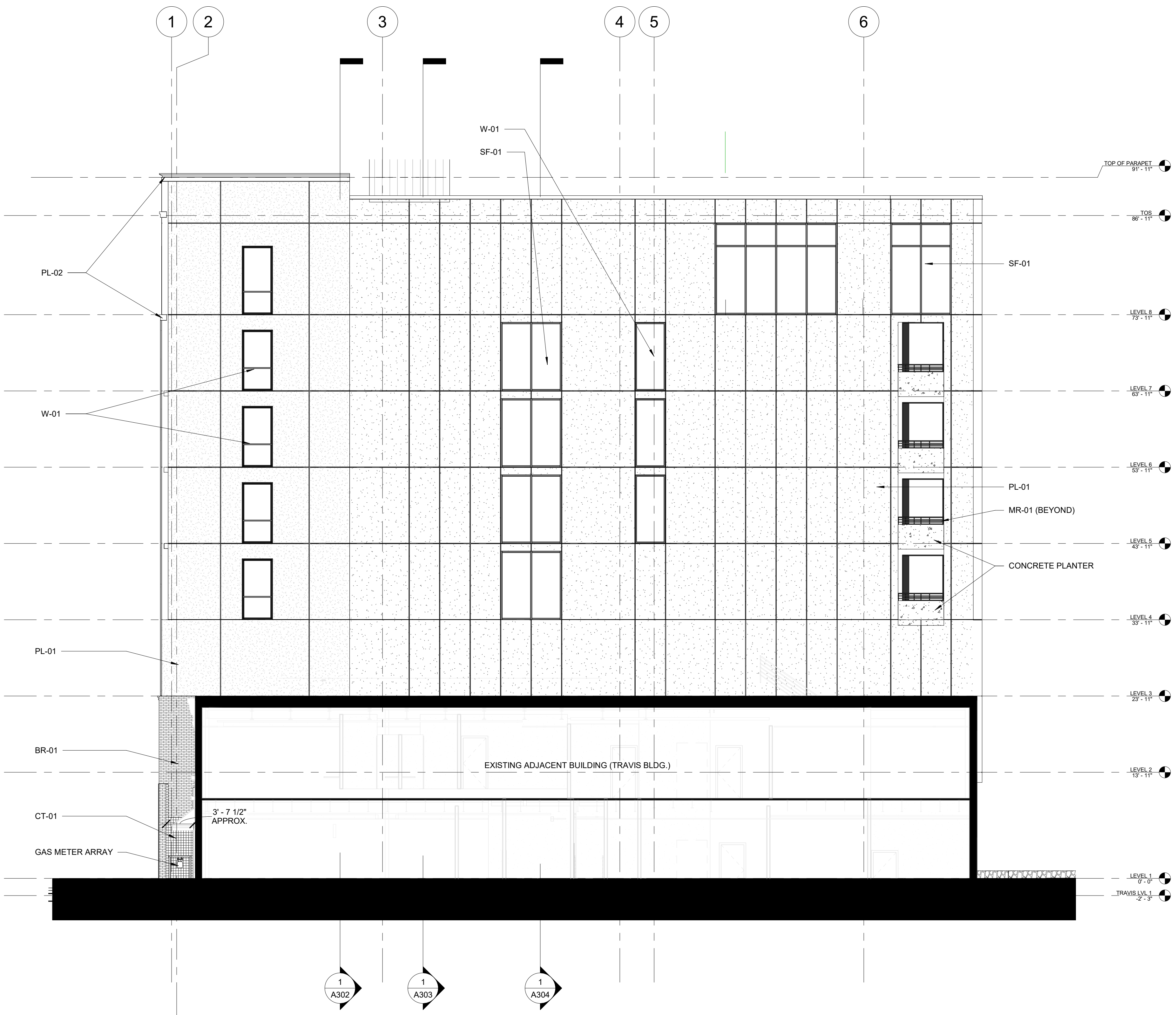
### EXTERIOR LEGEND

SYMBOL	DESCRIPTION
	<b>STANDARD FACE BRICK FACADE</b>
BR-01	STANDARD FACE BRICK FACADE SYSTEM W/ CONTINUOUS RIGID INSULATION, AIR GAP, AND THRU WALL FLASHING
	<b>STANDARD FACE BRICK FACADE</b>
BR-02	STANDARD FACE BRICK FACADE SYSTEM W/ CONTINUOUS RIGID INSULATOR, AIR GAP, AND THRU WALL FLASHING
	<b>EIFS FACADE (PAINT 01)</b>
PL-01	PLASTER FINISH SYSTEM W/ CONTINUOUS INSULATION
	<b>EIFS FACADE (PAINT 02)</b>
PL-02	PLASTER FINISH SYSTEM W/ CONTINUOUS INSULATION
	<b>EXISTING STONE WALL</b>
ST-01	CLEAN EXISTING STONE WALL WITH LOW PRESSURE HOT WATER WASH WITH A MILD DETERGENT. RE-POINT EXISTING MASONRY WITH MORTAR THAT MATCHES THE EXISTING IN COLOR AND COMPOSITION. COORDINATE NEW OPENINGS IN WALL AS SHOWN, REF. TO STRUCTURAL DRAWINGS.
	<b>STONE BANDING</b>
ST-02	STONE BANDING / PARAPET CAP

SYMBOL	DESCRIPTION
CT-01	CERAMIC TILE
	GLAZED DECORATIVE CERAMIC TILE
MR-01	PAINTED STEEL GUARDRAIL
	DECORATIVE PAINTED STEEL GUARDRAIL
W-01	COMPOSITE / FIBERGLASS WINDOWS
	MPOSTE / FIBERGLASS FRAMED WINDOWS. REFER TO WINDOW SCHEDULES
D-01	COMPOSITE / FIBERGLASS DOORS
	COMPOSITE / FIBERGLASS FRAMED SLIDING DOORS. REFER TO DOOR SCHEDULES
SF-01	ALUMINUM STOREFRONT
	THERMALLY BROKEN ANNOXIDIZED ALUMINUM STOREFRONT SYSTEM
GL-01	GLASS BLOCK
	GLASS BLOCK SYSTEM



② EXTERIOR ELEVATION - WEST  
1/8" = 1'-0"



1 EXTERIOR ELEVATION - EAST  
1/8" = 1'-0"